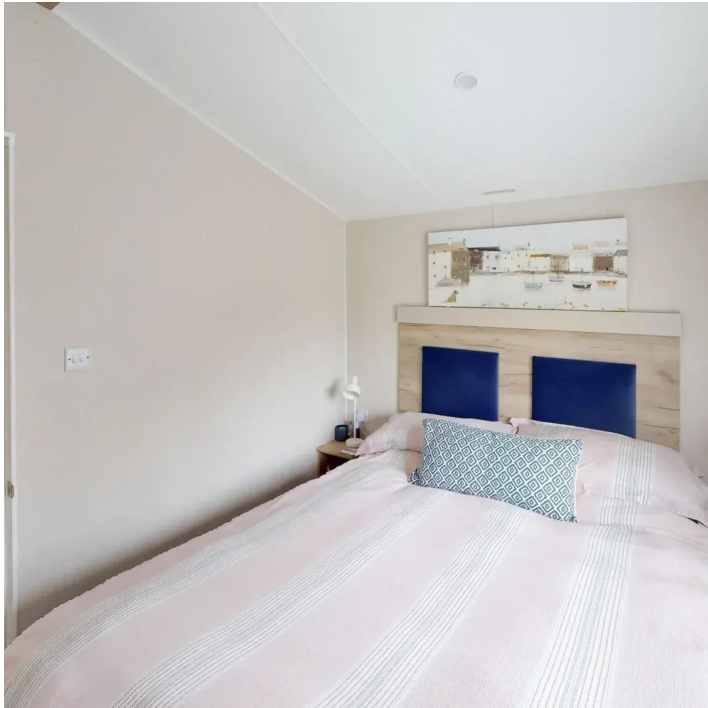




LONG ASHES

PARK



Willerby Linwood

Plot 10

Price: £54,995

Description

Welcome to the Willerby Linwood, a stunning holiday home nestled on Plot 10, offering the perfect blend of comfort, style, and modern convenience. This delightful retreat boasts an open plan living room*, kitchen, and dining area, exuding a clean and sleek design with a contemporary feel throughout.

As you step inside, you'll be greeted by the spacious and inviting living area, featuring a large L-shaped sofa perfect for relaxation. Adorned with many windows, this space is bathed in natural light, creating a warm and welcoming ambiance. A focal point of the room is the electric wall-mounted fire, adding both charm and cosiness to the space.

Adjacent to the living area is the well-presented modern kitchen, equipped with all the necessary appliances including an oven & grill with gas hob, integrated microwave, and fridge freezer. With ample workspace, preparing meals will be a breeze in this stylish kitchen.

The dining area offers a comfortable setting for enjoying meals with family and friends, featuring a dining table with bench seating, creating an intimate atmosphere for gatherings and conversations.

This holiday home boasts two bedrooms, providing ample accommodation for guests. The master bedroom features a luxurious king-size bed with a headboard, accompanied by bedside tables, a double wardrobe, and a small dressing table with a wall mirror. Meanwhile, the second bedroom offers twin beds with headboards and overhead storage, along with a single wardrobe, ensuring a comfortable and restful stay for all occupants.

The bathroom is modern and functional, equipped with a shower, basin, and toilet. Additional storage space is provided by a tall storage unit and cupboard, offering convenience and practicality.

Stepping outside, you'll find a decking area, perfect for enjoying the outdoors and soaking up the sun. Sliding doors seamlessly connect the indoor and outdoor spaces, allowing for easy access and creating a seamless flow between the two areas.

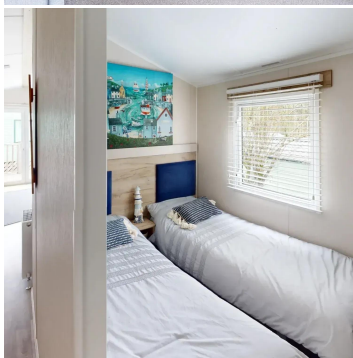
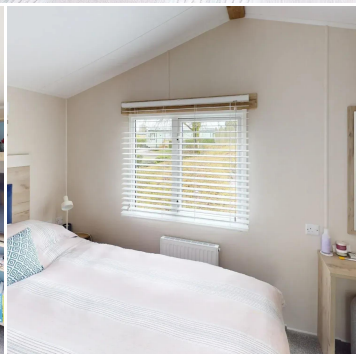
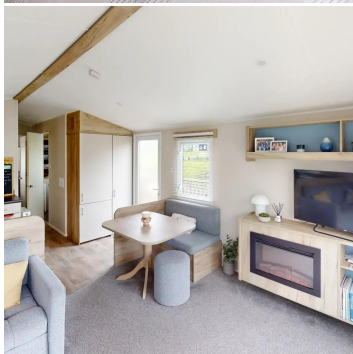
Completing this holiday home is a gravel parking area, accessed via steps from the deck, offering convenient parking facilities for your vehicles.

Experience the ultimate holiday retreat with the Willerby Linwood, where modern comfort meets serene relaxation in a picturesque setting.

*Please note that the TV is not included.

Key Features

- 32 x 12ft
- Open plan lounge, kitchen, diner
- 2 bedrooms
- Main bathroom and en-suite in double
- Side deck
- Licence until 31st December 2036
- 11 month holiday season



Contact Us

Call: 01756 752261

Email: info@longashespark.co.uk

www.longashespark.co.uk

