



LONG ASHES PARK



Plot 80 - Victory Stonewood

Plot 80

Price: £77,000

Description

Welcome to the Victory Stonewood on Pitch 80, an exquisite holiday home designed to offer both comfort and style. This brand-new 2022 model boasts modern amenities and thoughtful design features, making it an ideal choice for families and individuals seeking a memorable holiday retreat. With a generous size of 35 x 12, the Stonewood provides ample space for relaxation and entertainment.

Step inside to discover a spacious and inviting interior that effortlessly blends modern design with homely charm. The large kitchen and dining area serve as the heart of the home, featuring modern bench seating that encourages gatherings and shared meals. The kitchen is equipped with an integrated microwave and ample counter space, perfect for preparing delicious feasts. Contemporary open storage solutions in the bedrooms add both style and practicality, ensuring you have plenty of space to keep your belongings organised.

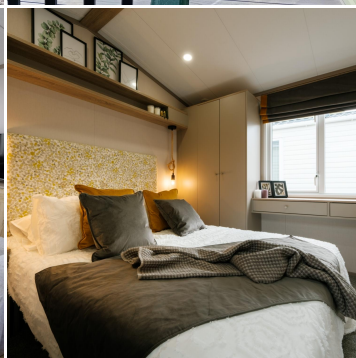
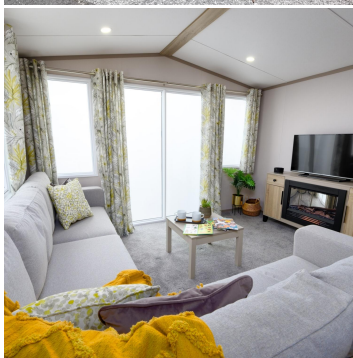
The Victory Stonewood is designed with your comfort in mind. The sliding front door allows for easy access and enhances the open feel of the living space. The easy-to-maintain bathroom is fitted with all the essentials, providing a hassle-free holiday experience. The two well-appointed bedrooms offer a restful sanctuary after a day of adventure, each designed to maximise comfort and functionality.

With an 11-month holiday season and a 15-year licence, the Victory Stonewood offers the perfect blend of flexibility and long-term investment. This modern traditional holiday home is more than just a place to stay; it's a lifestyle choice. Whether you're looking to escape for a weekend or spend extended periods in a tranquil setting, the Stonewood is equipped to meet your needs.

The Victory Stonewood on Pitch 80 is more than just a holiday home; it's a gateway to creating lasting memories. Its high-quality build, thoughtful design, and comprehensive features make it an excellent choice for those seeking a comfortable and charming retreat. Embrace the opportunity to make the Stonewood your own and enjoy holidays your way for years to come.

Key Features

- **Model:** Victory Stonewood (2022) - (Brand New and unused)
- **Size:** 35 x 12
- **Bedrooms:** 2
- **Features:** Sliding front door, integrated microwave
- **Licence:** 15-year licence
- **Season:** 11-month holiday season



Contact Us

Call: 01756 752261

Email: info@longashespark.co.uk

www.longashespark.co.uk

