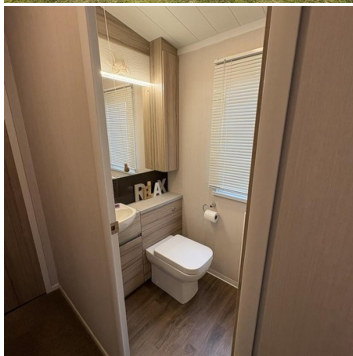
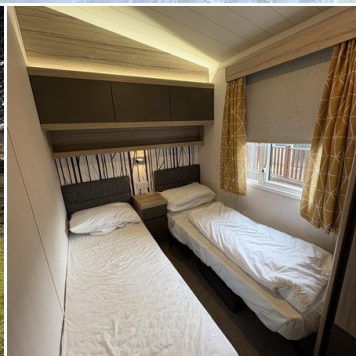




LONG ASHES

PARK



Swift Antibes- Plot 72

Plot 72

Price: £50,000

Description

Escape to the breathtaking Yorkshire Dales with Swift Antibes, Plot 72, a beautifully designed holiday home offering the perfect balance of modern living and countryside charm. Nestled within the serene surroundings of Long Ashes Park, this stylish retreat provides a welcoming space for families, couples, or anyone seeking a peaceful getaway in nature. With a thoughtfully planned interior, high-quality finishes, and a wraparound decking area, this home is designed for both comfort and relaxation.

Step into a bright and airy open-plan living space, designed for relaxation and entertaining. The L-shaped corner sofa invites you to unwind after a day of exploring, while a large mirror and generous shelving add both practicality and a sense of space. The room is bathed in natural light, thanks to multiple windows, including a large front window leading directly to the decking—the perfect spot to enjoy your morning coffee while taking in the peaceful surroundings.

The sleek and modern kitchen is fully equipped with integrated appliances, including a fridge freezer, microwave, hob, oven, and a stylish splashback. Thoughtfully designed for both convenience and aesthetics, this kitchen provides everything you need to prepare meals with ease. Adjacent to the kitchen, the free-standing dining table with two chairs and a bench offers a cosy yet stylish setting for family dinners or intimate meals with friends.

The master bedroom is a tranquil haven, offering a comfortable double bed with a plush mattress, bedside tables with elegant lighting, and overhead storage to keep everything neatly organised. A dressing table with a mirror adds a touch of sophistication, making it easy to get ready for the day ahead. The spacious wardrobe ensures ample storage for clothing and personal belongings. Adding an extra touch of convenience, the private ensuite bathroom features a modern shower, WC, wash basin, and mirror, creating a truly self-contained retreat.

Perfect for guests or family members, the twin bedroom is designed with both comfort and functionality in mind. Featuring two cosy beds with quality mattresses, a bedside table, overhead cupboards, and a built-in wardrobe, this room provides a warm and inviting atmosphere. Fabric curtains and a wall-mounted mirror complete the space, adding a homely feel.

The main family bathroom offers a stylish yet practical design, featuring an enclosed shower, a dual flush WC, a wash basin, and a mirror. Whether you're freshening up in the morning or unwinding after a long day, this space provides all the modern comforts you'd expect from a premium holiday home.

One of the standout features of Swift Antibes, Plot 72 is the wraparound decking area, extending around both the front and side of the home. This spacious outdoor area is perfect for alfresco dining, sunbathing, or simply taking in the fresh air of the Yorkshire Dales. With steps leading down to a private gravel parking area, you'll have easy access to your vehicle whenever you're ready to explore the local countryside.

Whether you're seeking a luxurious holiday escape, a weekend retreat, or a long-term getaway, Swift Antibes, Plot 72 at Long Ashes Park offers a modern, stylish, and well-equipped home in an idyllic location.

- 38 ft x 12 ft
- 2 bedrooms
- 2 bathrooms
- Spacious decking area
- Private parking
- License until the 31st December 2034

Contact Us

Call: 01756 752261

Email: info@longashespark.co.uk

www.longashespark.co.uk

