



LONG ASHES

PARK



Carnaby Oakdale - Plot 003

Plot 003

Price: £60,000

Description

Nestled in the heart of the stunning Yorkshire Dales, Carnaby Oakdale, Plot 003 at Long Ashes Park offers the perfect blend of modern style and home-from-home comfort. Measuring 37ft x 12ft, this beautifully designed two-bedroom holiday home features a main bathroom and an ensuite in the master bedroom, ensuring convenience and privacy for all guests. With a neutral colour palette, high-quality finishes, and thoughtfully designed spaces, this holiday retreat is perfect for those looking to relax and unwind.

The sleek and contemporary kitchen is designed for both practicality and style, featuring integrated appliances, including a fridge freezer, hob, oven, microwave, dishwasher, and washing machine. The clean lines and light tones of the cabinetry, paired with a stylish splashback, create a bright and airy space, making meal preparation a pleasure. Whether you're cooking a delicious family meal or enjoying a morning coffee, this kitchen has everything you need.

The open-plan living space is the perfect spot to unwind after a day exploring the Dales. A large L-shaped corner sofa provides plenty of seating and effortlessly transforms into a sofa bed for additional guests. The coffee table and large mirror add to the sense of space, while the floor-to-ceiling windows allow natural light to flood in. The double doors open directly onto the front decking, seamlessly blending indoor and outdoor living.

Adjacent to the living area, the free-standing dining table with four chairs offers a stylish and comfortable space to enjoy meals together. Whether it's a hearty breakfast before a day of adventure or a cosy dinner in, this dining area is designed for both practicality and elegance.

The master bedroom is a peaceful retreat, complete with a king-size bed and mattress, a bedside table with lamp, and fabric curtains for added warmth and privacy. Overhead cupboards and a spacious wardrobe provide plenty of storage, while the ensuite bathroom features a shower, flush WC, wash basin, and mirror for added convenience.

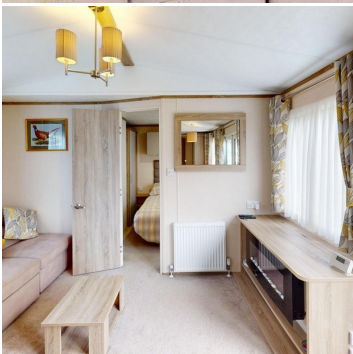
The twin bedroom is thoughtfully designed with two single beds, a bedside table, overhead storage, a wardrobe, and a mirror. The neutral colour palette and soft fabrics create a cosy yet modern space, making it perfect for children or guests.

The main bathroom offers a stylish yet practical space, featuring a fully enclosed shower, a dual flush WC, a wash basin, and a mirror. With its sleek design and high-quality finishes, it provides a spa-like experience within your own holiday home.

Step outside onto the spacious front decking area, the perfect place to enjoy a morning coffee or unwind in the evening while soaking in the natural beauty of Long Ashes Park. A pathway leads to a convenient outdoor shed, offering extra storage space. The small rockery and gravel parking area add to the charming exterior, blending beautifully with the tranquil surroundings.

With its light and neutral interior, modern features, and prime location in the heart of the Yorkshire Dales, Carnaby Oakdale, Plot 003 is an exceptional 37ft x 12ft, two-bedroom holiday home with a main bathroom and ensuite in the master bedroom. Offering comfort, convenience, and stunning natural surroundings, this stylish home is perfect for those seeking a peaceful retreat or a base for exploring the beautiful countryside.

- 37 ft x 12 ft
- 2 bedrooms
- 2 bathrooms
- Front decking area with a path leading to outside shed
- Private parking
- License until the 31st December 2035



Contact Us

Call: 01756 752261

Email: info@longashespark.co.uk

www.longashespark.co.uk

