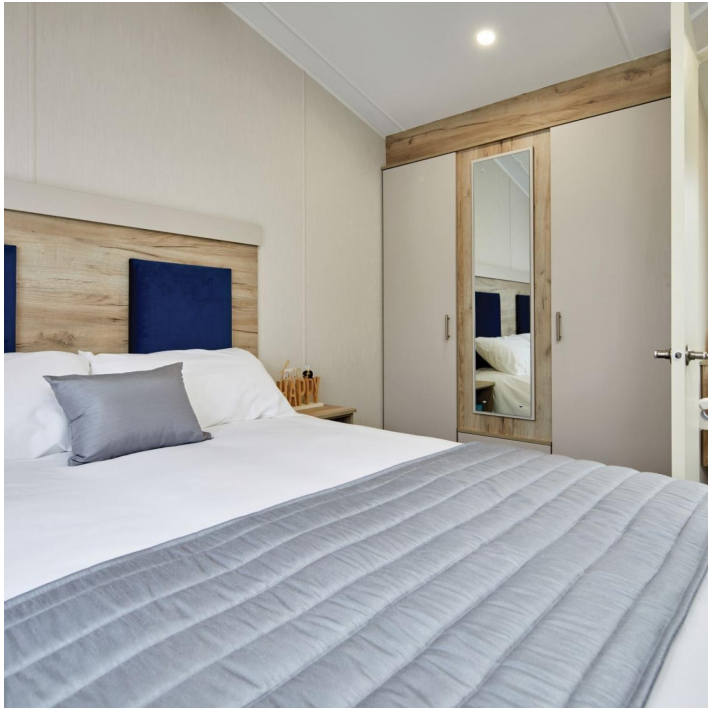




LONG ASHES

PARK



2023 Willerby Linwood

Ex Demo - Plot 109

Price: £70,000

Description

The 32ft x 12ft Willerby Linwood is the perfect holiday home for a family getaway. The stylish home hosts a subtle grey and blue colour scheme, complemented by bright bold yellow creating a fun, inviting atmosphere, perfect for spending time with loved ones.

The spacious open plan lounge has been designed with family in mind. Built with modern fixtures and ample space, allowing everyone to spread out and enjoy their time away in the Yorkshire Dales.

The well-crafted kitchen is designed for busy mealtimes, with plenty of storage and amenities including a fitted microwave, full oven and hob. The Linwood kitchen, diner fit with two benches is the heart of the holiday home.

The master bedroom is the perfect space for relaxation with a fun and fresh styling. The room offers plenty of storage in its bedside cabinets, wardrobe and dressing table with a mirror, the perfect place for your city escape or weekend break.

The guest room is made up of twin beds, a bedside cabinet and a wardrobe.

The family bathroom is fit with a shower, toilet and wash basin.

Outside there is private parking and a large front deck, providing the perfect setting for al fresco dining and a glass of wine when the sun goes down. The Linwood at Long Ashes Park in the Yorkshire Dales provides everything you need to make memories that will last a lifetime.



Key Features

- 32ft x 12ft
- 2 bedrooms
- Family bathroom plus en-suite
- Open plan lounge, kitchen, diner
- Large front deck
- Private parking
- 11 month holiday season
- 15 year licence

Contact Us

Call: 01756 752261

Email: info@longashespark.co.uk

www.longashespark.co.uk

